

### ROTATING QUICK COUPLER FOR GRADALL EXCAVATORS

#### Toolbar Attachment

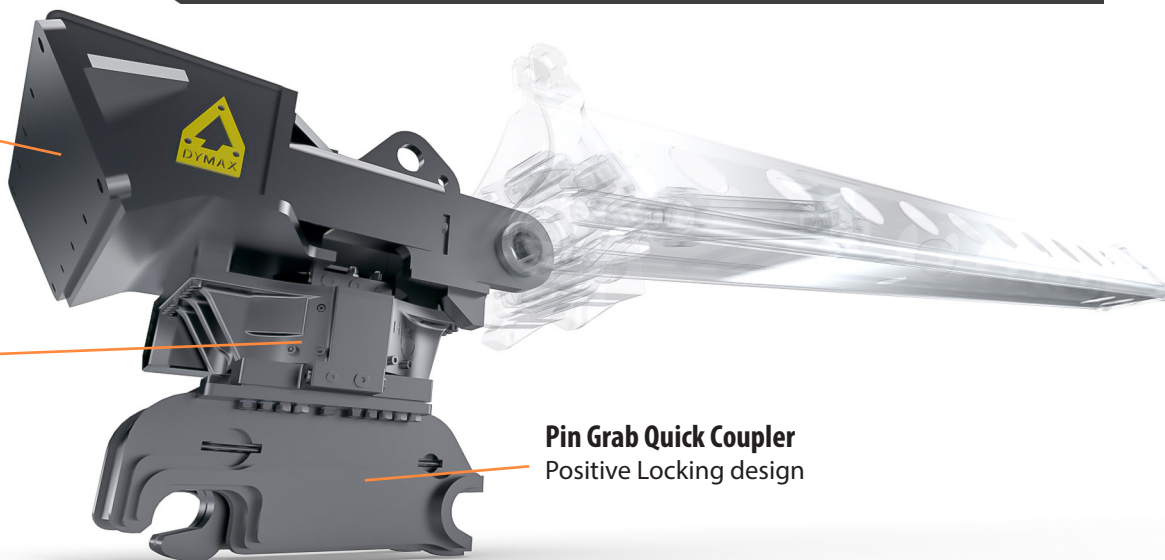
Bolt-on interface for railway or utility applications such as ballast clearing blades.

#### Rotator

High strength  
Up to 5 ports  
40 GPM

#### Pin Grab Quick Coupler

Positive Locking design



## OVERVIEW

<b>Fits:</b>	Gradall excavators
<b>Rotation:</b>	360° continuous
<b>Tilt:</b>	None
<b>Hydraulics:</b>	Requires only 1 auxiliary circuit
<b>Coupler Lock:</b>	Hydraulic or Manual
<b>Functions:</b>	1 or 2 circuits (5 lines) below, subject to coupler lock
<b>Installation:</b>	Wire cable kit + drain & jump lines

#### What it is?

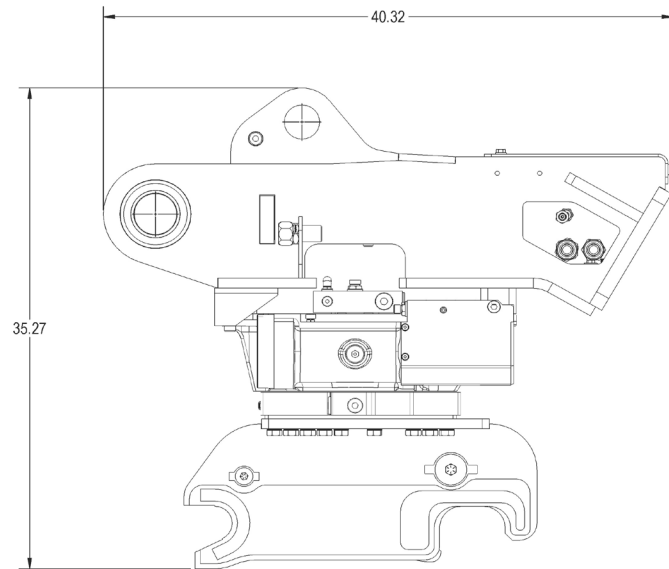
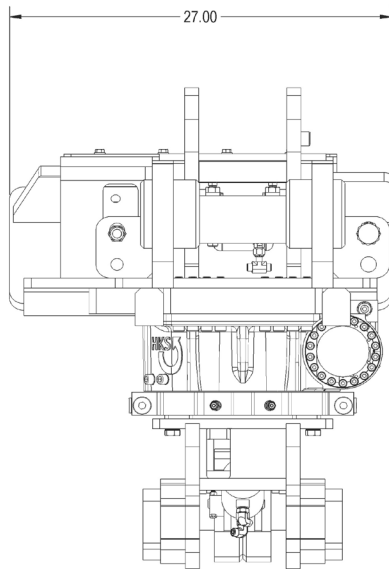
The Dymax Rotating Coupler adds full 360° rotation to Gradall Excavators, working seamlessly with the machine's built-in 220° boom tilt. No tilt is required in the coupler itself, so you can get more done with fewer adjustments.

## APPLICATIONS

- **Railway Maintenance** - Handle tools and attachments on or off track.
- **Municipal and Utility work** - Ideal for mowing, ditch cleaning, and roadside work.
- **Forestry and Land Clearing** - Rotate grapples and tree shears with precision.
- **General Construction** - Grading, trenching or material handling tasks.
- **Demolition** - Superior access in confined spaces.

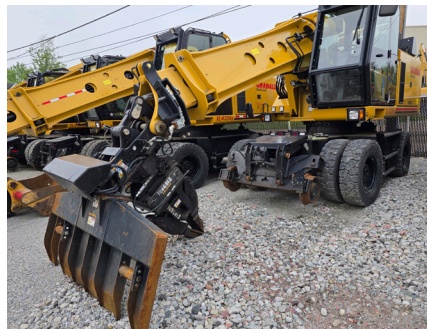
## KEY BENEFITS

- 360° continuous rotation.
- Uses factory auxiliary hydraulics.
- Custom Dymax valve for secure locking and proportional control.
- No tilt needed - Gradall handles that.
- Simple bolt-on toolbar attachments for odd jobs.



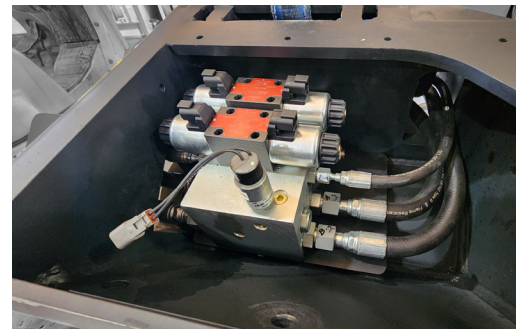
Model Code / Group No. Description	Rotation Degrees	Weight (lbs)
DX-QC-PGH-360GRADALL-HX-14/18T ; 7210D2 Quick Coupler-Pin Grab Hydraulic-360 rotator Gradall compatible	360	1,470
<b>STANDARD FEATURES:</b> Full 360° continuous rotation system • Hydraulic camlock pin grab coupler compatible with Gradall standard attachments • Proportional multifunction control valve with control group • Toolbar interface ( <i>toolbar attachments sold separately</i> )		
<b>INSTALLATION REQUIREMENTS:</b> Dealer to install control group from coupler to cab.		
<b>Options:</b> Manual locking coupler, Cat A Link (65MM) compatible <b>Toolbar Attachments:</b> Ballast rake, ballast blade, lift hook		

Design and specifications are subject to change without notice.



#### Toolbar Attachment

Shown with ballast clearing blade installed



#### Integrated Technology

Proportional control of multiple functions using factory auxiliary hydraulics.



**DYMAXRAIL**  
402 Miller Drive  
Wamego, KS 66547 USA

Toll Free: 800.530.5407 (USA/CAN)  
Office: +1.785.456.2081  
Fax: +1.785.456.8328

[www.DYMAXRAIL.com](http://www.DYMAXRAIL.com)  
[sales@DYMAXRAIL.com](mailto:sales@DYMAXRAIL.com)