

DYMAX WORK TOOLS

TIE HANDLERS FOR BACKHOE LOADERS AND EXCAVATORS

OVERVIEW

Dymax Rail Tie Handlers, or tie grapplers, are both tie inserters and tie extractors, and can change wood and concrete ties in minutes flat, and can be used with backhoe loaders and excavators. Quickly change 20 to 50 ties per hour, and in some cases more, depending on the machine and operator performance.

Dymax Rail Tie Handlers are built for years of productive use and service, and improve efficiency in tie changeouts.

Each model features 360 degrees of hydraulic gear driven rotation powered through an individual motor. Models for rotational tilt couplers are also available.

Heavy duty tie pads can be easily replaced when worn and give operators a firm grip on ties.

A powerful squeeze cylinder is well protected from the abusive elements inherent in tie changing applications.

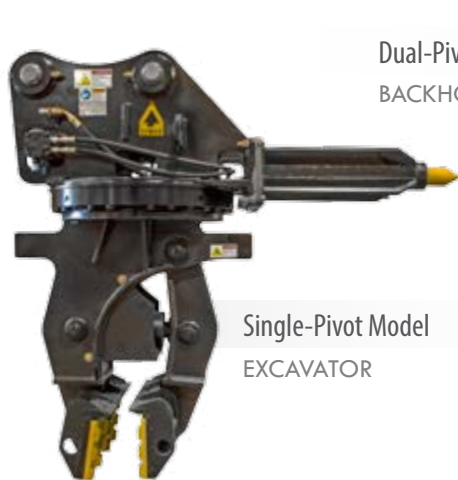


FEATURES AND SPECIFICATIONS

- Provided with machine connection pins
- Electro-hydraulic diverter valve standard.
Machine requires one set of lines with bi-directional flow.
- 360° gear drive with wheel motor.
- Powerful squeeze cylinder with built-in lock valve
- Replaceable ROKGÅRD™ Carbide pads.



Raking
Optional bolt-on
ballast rakes/blades.



Single-Pivot Model
EXCAVATOR

Dual-Pivot Model
BACKHOE LOADER



Dual-Pivot Model
EXCAVATOR



DYMAX Rail | Toll Free: 800.530.5407 (USA/CAN)
402 Miller Drive | Office: +1.785.456.2081
Wamego, KS 66547 USA | Fax: +1.785.456.8328

www.DYMAXRAIL.com
sales@DYMAXRAIL.com