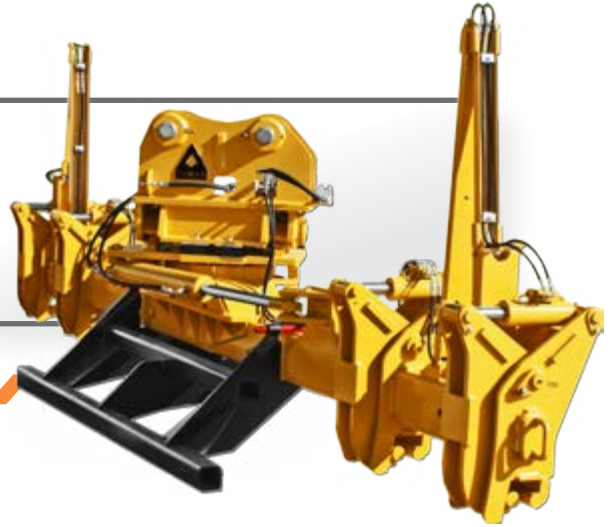


DYMAX WORK TOOLS

RAIL HANDLER FOR EXCAVATORS

OVERVIEW

The Dymax Rail Handler was designed for handling all rail sizes up to 30 meter in length. Ideal for 20 ton excavators and larger, the Dymax Rail Handler picks rail from piles and places rail into position for flash butt welding operations. The Rail Handler makes Rail Handling safer and removes the need for chains, rigging and personnel climbing on rail piles.



FEATURES AND SPECIFICATIONS

- Lock-Valve cylinders
- 30° hydraulic rotation
- Storage stand
- 24v diverter valve provided
- High tensile steel rail grabs
- Pins for attaching to coupler system or machine
- Arms extend manually to 27 or 30 feet



Hydraulic Functions Required	Flow Ratings GPM (LPM)	Pressure PSI (bar)
Excavator - requires 1 two way flow circuit	6-8 (22-30)	3,500 (241)
Rotation Circuit - is provided with diverter valve and connector	6-8 (22-30)	3,500 (241)

Model #	Description/Retracted x Extended (ft x ft - m x m)	Weight lb	Weight kg
DX-RH-GL-16x27-HX-20T	Rail Handler, Grapple (16 x 27 - 4.88 x 8.23)	4,500	2,041
DX-RH-GL-18x30-HX-25T	Rail Handler, Grapple (18 x 30 - 5.49 x 9.14)	4,800	2,177
DX-RH-GL-18x30-HX-30T	Rail Handler, Grapple (18 x 30 - 5.49 x 9.14)	5,200	2,359

Full model list available online



DYMAX Rail
402 Miller Drive
Wamego, KS 66547 USA

Toll Free: 800.530.5407 (USA/CAN)
Office: +1.785.456.2081
Fax: +1.785.456.8328

www.DYMAXRAIL.com
sales@DYMAXRAIL.com